

Torchuck TC

Driving the Future
Creating Global Value





■ Our Mission

To provide global customers with high-quality, high-performance, and highly reliable construction machinery products and integrated solutions, driving global infrastructure and industrial development.

■ Our Vision

To become a world-leading manufacturer and solution provider of construction machinery, building a globally recognized brand and enabling greater value for our customers.

■ Innovation Driven

Continuous technological innovation to lead the industry.

■ Quality First

Win the market with superior quality and create excellent products.

■ Customer Centric

Deeply understand customer needs and deliver premium services.

■ Integrity & Win-Win

Uphold integrity and collaborate with partners to create shared value.

■ Green Development

Focus on sustainable development and promote eco-friendly solutions.

About *Driving the Future Creating Global Value*

Torchuck



Torchuck is a global expert in construction machinery solutions. We specialize in designing, manufacturing, and providing high-quality, innovative machinery products tailored to meet diverse global construction and industrial needs.

We are committed to excellence and dedicated to helping our customers succeed through cutting-edge technology and unparalleled service.

--Torchuck is a global expert in construction machinery solutions.

Heavy-duty Skid Steer Loader



Compact Skid Steer Loader



Forklifts: Electric/Diesel/Pallet



Mini Excavator



SL-H50

Technical Specifications

Project	Parameters
Engine model	Xinchai 490/498
Rated power (kW)	35.7 KW
Maximum torque (N·m)	200/1600
Number of cylinders	4
Displacement (L)	3.3
Transmission System	
Travel speed (Km/h)	12
Transmission type	Hydrostatic closed - loop
Travel pump	Double - swash - plate axial piston variable - displacement pump
Travel motor	Radial piston fixed - displacement motor X2 / Radial piston two - speed variable - displacement motor
Chain specification	800S - 1R - 60
Chain tension adjustment	None
Tire	10.0 (12.0) - 16.5
Performance Parameters	
Rated load (kg)	760
Overturning load (kg)	1740
Lifting mechanism type	Radial lifting
Bucket breakout force (N)	22000
Hydraulic System	
System safety pressure (bar)	180
Rated flow of hydraulic system	66.2 (L/min)
Control Method	Mechanical / Hydraulic control
External Dimensions	
Maximum height of cab roof (mm)	2007
Total length with bucket (mm)	3433
Total length without attachments (mm)	2571
Total width at tire edge (mm)	1740
Total width at bucket edge (mm)	1800
Wheelbase (mm)	1050
Operating Range	
Dumping height (mm)	2511
Maximum dumping distance (mm)	603
Maximum height of bucket hinge pin (mm)	3265
Ground clearance (mm)	185
Others	
Working weight with standard bucket (Kg)	2950
Fuel tank capacity (L)	88
Bucket capacity (m³)	0.35 - 0.5



Features

- Heavy-duty capacity designed for demanding environments.
- Versatile performance with numerous attachment options.
- Exceptional stability and safety features for tough job sites.

■ SL-S1

Technical Specifications

Project	Parameters
Equipment Model	SL-S1
Engine Model	Runlong 740
Bucket Capacity	0.15 m³
Maximum Lifting Force	375 KG
Working Speed	6 Km/H
Rated Pressure	17 Mpa
Gradability	30 Degree
Working Weight	890 Kg
Rated Loading Capacity	200 Kg
Machine Dimensions	1750/1100/1250 MM
Fuel Consumption	≤6.7 L/H
Maximum Engine Power/Horsepower	16.8KW/24Hp
Engine Model	Runlong 740
Travel Mode	Crawler/Wheeled
Starting Method	Electric Start
Toolbox	Common Tools



Features

- Compact, agile design ideal for tight spaces.
- Stand-on and Ride-on models available for diverse operational needs.
- Multiple attachments available for different job scenarios.



■ SL-R2

Technical Specifications

Project	Parameters
Equipment Model	SL-R2
Engine Model	RUNTONG
Bucket Capacity	0.2m³
Maximum Lifting Force	450kg
Working Speed	6Km/H
Rated Pressure	17Mpa
Gradability	30 Degree
Working Weight	950kg
Rated Loading Capacity	240kg
Machine Dimensions	1950/1250/1250mm
Fuel Consumption	
Maximum Engine Power/Horsepower	
Engine Model	Runlong 740
Travel Mode	Crawler/Wheeled
Starting Method	Electric Start
Toolbox	Common Tools



Features

- Compact, agile design ideal for tight spaces.
- Stand-on and Ride-on models available for diverse operational needs.
- Multiple attachments available for different job scenarios.



Attachments

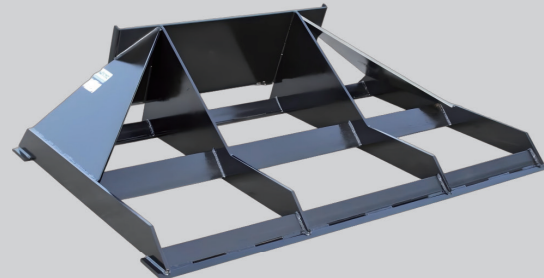
Driving the Future
Creating Global Value

for Skid Steer Loaders

Silage Bucket



Land Leveler



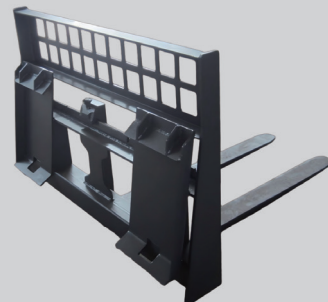
Sweeper



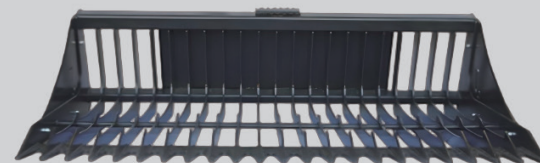
Enclosed Sweeper



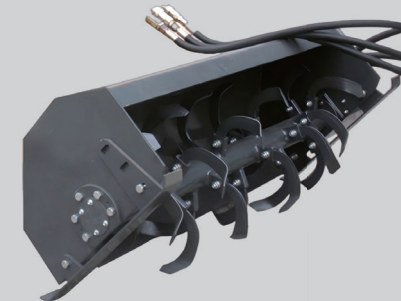
Pallet Fork



Rock Bucket



Rotary Tiller



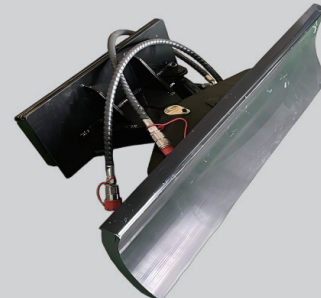
Grapple Bucket



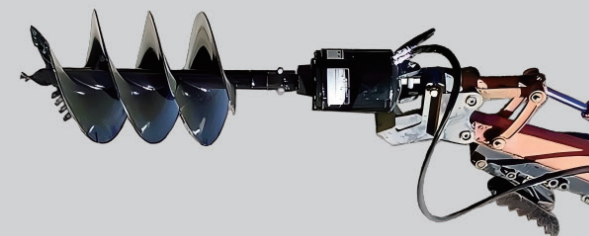
Stump Grinder



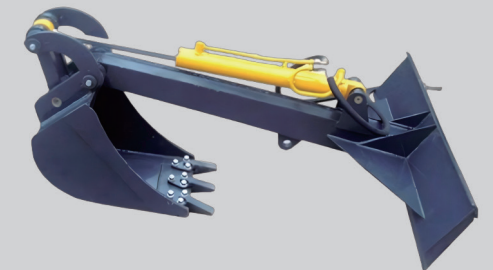
Dozer Blade



Auger



Purpose Bucket



Wood Chipper



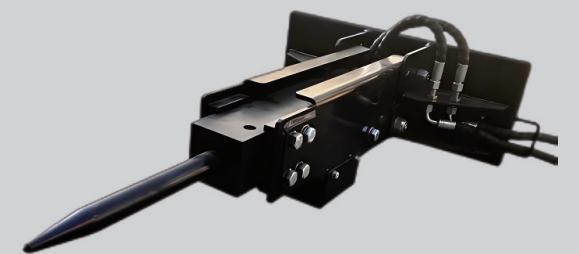
Snow Blower



Trencher



Hammer



EF420E

Technical Specifications

Project	Parameters
Rated Load Capacity	2000kg
Load Center Distance	500mm
Rear Overhang	190mm
Front Overhang	340mm
Wheelbase	1500mm
Total Weight - Unladen	3520kg
Overall Length to Fork Face	2035mm
Overall Width	1140mm
Overhead Guard Height	2040mm
Standard Mast Height - Lowered	2010mm
Maximum Fork Height at Rated Capacity	3000mm
Standard Mast Maximum Extended Height	4080mm
Standard Mast Tilt Angle - Forward/Rearward	7/7deg
Frame Ground Clearance	100mm
Standard Mast Ground Clearance	80mm
Standard Mast Free Lift Height	140mm
Turning Radius - Outer	1700mm
Minimum Aisle Width for Right-angle Stacking	2170mm
Minimum Theoretical Aisle Width for Right-angle Stacking	3725mm
Fork Spacing Range - Min x Max	200x970mm
Maximum Travel Speed - Unladen	18/17.5Km/h
Lifting Speed - Full/Empty Load	400/550Mm/s
Lowering Speed - Full/Empty Load	500/500Mm/s
Maximum Traction Force - Full/Empty Load	12100/12000N
Maximum Gradeability - Full Load	22%
Front Tires	18x7-8
Rear Tires	16x6-8
Battery	48V
Optional Lithium Battery	300-720ah
Drive Motor Rated Power	4.8x2Kw/rpm
Lift Motor Rated Power	11Kw/rpm
Controller Type	AC
Standard Configuration	(Rated loads (1.6T, 1.8T, 2.0T); 2-stage 3m mast; standard 1070mm forks (optional lengths); imported motor; imported controller; imported hydraulic components; 450Ah battery; smart charger; pneumatic/solid tires; turning deceleration; lifting speed control; premium safety seat)



Features

- Zero emissions, eco-friendly.
- Efficient and quiet operation.
- Suitable for indoor warehouses and clean areas.

EF325

Technical Specifications

Project	Parameters
Rated Load Capacity	2500kg
Load Center Distance	500mm
Rear Overhang	300mm
Front Overhang	465mm
Wheelbase	1500mm
Total Weight - Unladen	4080kg
Overall Length to Fork Face	2265mm
Overall Width	1170mm
Overhead Guard Height	2085mm
Standard Mast Height - Lowered	1990mm
Maximum Fork Height at Rated Capacity	3000mm
Standard Mast Maximum Extended Height	4060mm
Standard Mast Tilt Angle - Forward/Rearward	6/9deg
Frame Ground Clearance	115mm
Standard Mast Ground Clearance	100mm
Standard Mast Free Lift Height	125mm
Turning Radius - Outer	2065mm
Minimum Aisle Width for Right-angle Stacking	2065mm
Minimum Theoretical Aisle Width for Right-angle Stacking	3530mm
Fork Spacing Range - Min x Max	240*1040mm
Maximum Travel Speed - Unladen	15Km/h
Lifting Speed - Full/Empty Load	350 \ 420Mm/s
Lowering Speed - Full/Empty Load	500 \ 500Mm/s
Maximum Traction Force - Full/Empty Load	12300 \ 12000N
Maximum Gradeability - Full Load	15%
Front Tires	21x8-9
Rear Tires	16x6-8
Battery	48V
Optional Lithium Battery	300-720ah
Drive Motor Rated Power	11Kw/rpm
Lift Motor Rated Power	11Kw/rpm
Controller Type	AC
Standard Configuration	(Load capacities (1.5T, 2.0T, 2.5T); 2-stage 3m mast; standard 1070mm forks (optional lengths); domestic AC motor; imported controller; imported hydraulic components; 450Ah battery; smart charger; 4 pneumatic tires; standard seat)



Features

- Zero emissions, eco-friendly.
- Efficient and quiet operation.
- Suitable for indoor warehouses and clean areas.

EF330A

Technical Specifications

Project	Parameters
Rated Load Capacity	3000kg
Load Center Distance	500mm
Rear Overhang	450mm
Front Overhang	500mm
Wheelbase	1750mm
Total Weight - Unladen	4200kg
Overall Length to Fork Face	2680mm
Overall Width	1260mm
Overhead Guard Height	2250mm
Standard Mast Height - Lowered	2230mm
Maximum Fork Height at Rated Capacity	3000mm
Standard Mast Maximum Extended Height	4265mm
Standard Mast Tilt Angle - Forward/Rearward	6/12deg
Frame Ground Clearance	100mm
Standard Mast Ground Clearance	80mm
Standard Mast Free Lift Height	150mm
Turning Radius - Outer	4280mm
Minimum Aisle Width for Right-angle Stacking	2380mm
Minimum Theoretical Aisle Width for Right-angle Stacking	4380mm
Fork Spacing Range - Min x Max	250x1100mm
Maximum Travel Speed - Unladen	18\15Km/h
Lifting Speed - Full/Empty Load	330\430Mm/s
Lowering Speed - Full/Empty Load	500\500Mm/s
Maximum Traction Force - Full/Empty Load	13200\12900N
Maximum Gradeability - Full Load	15%
Front Tires	28x9-15
Rear Tires	6.5-10
Battery	80V
Optional Lithium Battery	200-540ah
Drive Motor Rated Power	16.6Kw/rpm
Lift Motor Rated Power	21Kw/rpm
Controller Type	AC
Standard Configuration	(Rated loads (1.6T, 1.8T, 2.0T, 2.5T, 3.0T); 2-stage 3m mast; standard 1070mm forks (optional lengths); imported motor; imported controller; imported hydraulic components; 450Ah battery; smart charger; pneumatic/solid tires; turning deceleration; lifting speed control; premium safety seat)



Features

- Zero emissions, eco-friendly.
- Efficient and quiet operation.
- Suitable for indoor warehouses and clean areas.

EF330

Technical Specifications

Project	Parameters
Rated Load Capacity	3000kg
Load Center Distance	500mm
Rear Overhang	350mm
Front Overhang	465mm
Wheelbase	1700mm
Total Weight - Unladen	4940kg
Overall Length to Fork Face	2485mm
Overall Width	1240mm
Overhead Guard Height	2120mm
Standard Mast Height - Lowered	2050mm
Maximum Fork Height at Rated Capacity	3300mm
Standard Mast Maximum Extended Height	4080mm
Standard Mast Tilt Angle - Forward/Rearward	6/9deg
Frame Ground Clearance	120mm
Standard Mast Ground Clearance	120mm
Standard Mast Free Lift Height	140mm
Turning Radius - Outer	2230mm
Minimum Aisle Width for Right-angle Stacking	2340mm
Minimum Theoretical Aisle Width for Right-angle Stacking	4280mm
Fork Spacing Range - Min x Max	250*1100mm
Maximum Travel Speed - Unladen	16\14Km/h
Lifting Speed - Full/Empty Load	340\420Mm/s
Lowering Speed - Full/Empty Load	500\500Mm/s
Maximum Traction Force - Full/Empty Load	17600\16350N
Maximum Gradeability - Full Load	20%
Front Tires	21x8-9
Rear Tires	16x6-8
Battery	80V
Optional Lithium Battery	400-830ah
Drive Motor Rated Power	15Kw/rpm
Lift Motor Rated Power	13.5Kw/rpm
Controller Type	AC
Standard Configuration	(Load capacities (1.5T, 2.0T, 2.5T, 3.0T, 3.5T); 2-stage 3m mast; standard 1070mm forks (optional lengths); domestic AC motor; imported controller; imported hydraulic components; 450Ah battery; smart charger; 4 pneumatic tires; standard seat)



Features

- Zero emissions, eco-friendly.
- Efficient and quiet operation.
- Suitable for indoor warehouses and clean areas.

EF450

Technical Specifications

Project	Parameters
Rated Load Capacity	5000kg
Load Center Distance	500mm
Rear Overhang	409mm
Front Overhang	565mm
Wheelbase	2000mm
Total Weight - Unladen	8000kg
Overall Length to Fork Face	2975mm
Overall Width	1496mm
Overhead Guard Height	2300mm
Standard Mast Height - Lowered	2300mm
Maximum Fork Height at Rated Capacity	4110mm
Standard Mast Maximum Extended Height	3000mm
Standard Mast Tilt Angle - Forward/Rearward	6/6deg
Frame Ground Clearance	140mm
Standard Mast Ground Clearance	170mm
Standard Mast Free Lift Height	150mm
Turning Radius - Outer	2650mm
Minimum Aisle Width for Right-angle Stacking	2650mm
Minimum Theoretical Aisle Width for Right-angle Stacking	4750mm
Fork Spacing Range - Min x Max	300x1350mm
Maximum Travel Speed - Unladen	18/16Km/h
Lifting Speed - Full/Empty Load	400/500Mm/s
Lowering Speed - Full/Empty Load	450/450Mm/s
Maximum Traction Force - Full/Empty Load	25720 \ 23950N
Maximum Gradeability - Full Load	20%
Front Tires	28x12.5-15
Rear Tires	21x8-9
Battery	80V
Optional Lithium Battery	400~830ah
Drive Motor Rated Power	2x12Kw/rpm
Lift Motor Rated Power	25.5Kw/rpm
Controller Type	Ac
Standard Configuration	(Load capacity; 2-stage 3m mast; standard 1220mm forks; imported dual drive motors; imported controller; imported hydraulic components; imported transmission; fingertip control; 700Ah battery; smart charger; 4 solid tires; lifting speed control; premium safety seat)



Features

- Zero emissions, eco-friendly.
- Efficient and quiet operation.
- Suitable for indoor warehouses and clean areas.

G40/G45/G50

Features

- Robust power for heavy-duty lifting.
- Ideal for outdoor and rough terrain environments.



Internal Combustion Counterbalanced Forklift

Model	CPC-G40	CPCD-G40	CPC-G45	CPCD-G45	CPC-G50X	CPCD-G50X
Power type	Diesel	Diesel	Diesel	Diesel	Diesel	Diesel
Lift capacity	4000kg	4000kg	4500kg	4500kg	5000kg	5000kg
Load center distance	500mm	500mm	500mm	500mm	500mm	500mm
Battery (Voltage/Capacity)	12/80V/Ah	12/80V/Ah	12/120V/Ah	12/120V/Ah	12/120V/Ah	12/120V/Ah
Max.lift height	3000mm	3000mm	3000mm	3000mm	3000mm	3000mm
Free lift height	160mm	160mm	160mm	160mm	160mm	16mm0
Mast tilt angle (front/rear)	6/12°	6/12°	6/12°	6/12°	6/12°	6/12°
Max.lift speed (full load/no load)	420/440mm/s	420/440mm/s	430/470mm/s	450/510mm/s	420/460mm/s	440/500mm/s
Max.lowering speed (full load/no load)	330/310mm/s	330/310mm/s	420/350mm/s	4201350mm/s	430/350mm/s	430/350mm/s
Max.traveling speed (full load/no load)	19/19.5km/h	19/19.5km/h	18.5/19km/h	22/23km/h	18.5/19km/h	22/23km/h
Min.turning radius	2730mm	2730mm	2930mm	2930mm	2930mm	2930mm
Gradeability (ful load/no load)	15/20%	15/20%	20/21%	20/21%	20/21%	20/21%
Max.traction force	25KN	25KN	29KN	29KN	29KN	29KN
Overweight	5200kg	5200kg	6450kg	6600kg	6700kg	6850kg
Length (without fork)	2960mm	2960mm	3220mm	3220mm	3220mm	3220mm
width	1400mm	1400mm	1500mm	1500mm	1500mm	1500mm
Height of mast	2130mm	2130mm	2275mm	2275mm	2275mm	2275mm
Overallheight (overhead guard)	2160mm	2160mm	2280mm	2280mm	2280mm	2280mm
Height of load-backrest	1350mm	1350mm	1280mm	1280mm	1280mm	1280mm
Overall height at max.lift	4230mm	4230mm	4230mm	4230mm	4230mm	4230mm
Min.ground clearance	140mm	140mm	169mm	169mm	169mm	169mm
Wheel base	1900mm	1900mm	2100mm	2100mm	2100mm	2100mm
Front wheel tread	1150mm	1150mm	1195mm	1195mm	1195mm	1195mm
Rear wheel tread	1070mm	1070mm	1195mm	1195mm	1195mm	1195mm
Front overhang	500mm	500mm	560mm	560mm	560mm	560mm
Rear overhang	580mm	580mm	560mm	560mm	560mm	560mm
Front tires	250-15-16PR	250-15-16PR	300-15-18PR	300-15-18PR	300-15-18PR	300-15-18PR
Rear tirese	7.00-12-12PR	7.00-12-12PR	7.00-12-12PR	7.00-12-12PR	7.00-12-12PR	7.00-12-12PR
Fork size(L*W*H)	1070*150*50mm	1070*150*50mm	1070*150*50mm	1070*150*50mm	1070*150*50mm	1070*150*50mm
Engine model	QUANCAHIV32-50C45		QUANCAHIV35-88C41			
Rated power	36.8/2500kw/rpm		65/2200kw/rpm			
Rated torque.	200/1600-1800N.m/rpm		355/1400-1600N.m/rpm			
Number ofcylinders	4		4			
Displacement	3.17L		3.47L			

■ **DF20-35**

Main Performance and Technical
Parameters of DF20-35

Model	Parameter
Rated lifting capacity	2000-3500kg
load center	500mm
Maximum lifting height	3000mm
Maximum descent speed at full load	450mm/s
Maximum lifting speed at full load	430mm/s
Maximum driving speed without load	20km/h
Maximum driving speed at full load	18.5km/h
Grade ability	20%
minimum turning radius	2420mm
Gate frame inclination angle(front/rear)	6 12°
Minimum ground clearance (door frame)	145mm
wheelbase	1700mm
Front wheelbase	1000mm
Rear wheelbase	980mm
Full length(without fork)	2716mm
Full width	1225mm
Full height	2192mm
Total Weight	4310kg



Features

- Robust power for heavy-duty lifting.
- Ideal for outdoor and rough terrain environments.

■ **ER320/EP325/EP330**

Technical Specifications

Model	ER320	EP325	EP330
Maximum load capacity	2000kg	2500kg	3000kg
load center	600mm	600mm	600mm
Maximum lifting height	120mm	120mm	120mm
Travel speed (without load)	5.5km/h	5.5km/h	5.5km/h
Travel speed (with load)	5km/h	5km/h	5km/h
Lifting speed (without load)	25mm/s	25mm/s	25mm/s
Lifting speed (with load)	20mm/s	20mm/s	20mm/s
Lowering speed (without load)	25mm/s	25mm/s	25mm/s
Lowering speed (with load)	40mm/s	40mm/s	40mm/s
Gradeability (without load)	5%	5%	5%
Gradeability (with load)	3%	3%	3%
Service Weight (with battery)	655kg	655kg	655
Overa lngth of frame	1995mm	1995mm	1995mm
Overall length of frame (with platform)	2414mm	2414mm	2414mm
Overall width of frame	782mm	782mm	782mm
Wheelbase	1465mm	1465mm	1465mm
Fork length	1150mm	1150mm	1150mm
Fork outside width	680mm	680mm	680mm
Fork inside width	340mm	340mm	340mm
Fork thickness	65mm	65mm	65mm
Fork height when fork lowered to lowest	85mm	85mm	85mm
Min ground clearance	5mm	5mm	5mm
Theoretical width of minimum aisle for right-angle stacking (1200x1000)	2360mm	2360mm	2360mm
Minimum turning radius (without platform)	1770mm	1770mm	1770mm
Minimum turning radius (with platform)	2170mm	2170mm	2170mm
Front wheel	85*70mm	85*70mm	85*70mm
Drive wheel	250*80mm	250*80mm	250*80mm
Caster wheel	130*55mm	130*55mm	130*55mm
Wheel material	polyurethane		
Drive motor type	AC series motor		
Rated output	1.5kw	1.5kw	1.5kw
Hoist motor type			
Rated output	1.2kw	1.2kw	1.2kw
Voltage	24V	24V	24V
Capacity	160AH	160AH	160AH
Weight	150kg	150kg	150kg



Features

- Compact and maneuverable.
- Essential for efficient warehouse operations.

■ 10 models/12 models

Technical Specifications		
Model	10 models	12 models
Bucket Capacity	0.025m³	0.025 m³
Excavator Bucket Width	380mm	380 MM
Excavation Height	2650mm	2650 MM
Excavation Depth	1550mm	1550 MM
Maximum Gradability	30°	30 Degree
Hydraulic Oil Tank Capacity	20L	20 L
Engine Oil Tank Capacity	1.1L	1.1 L
Ground Clearance	380mm	380 MM
Fuel Consumption	1L/h	1 L/H
Power	13-15 马力kW	13-15 HP(horsepower)
Weight	823kg	823 KG
Crawler Width	180mm	180 MM
Crawler Length	1250mm	1250 MM
Chassis Width	835mm	835 MM
Minimum Turning Radius	1290mm	1290 MM
Tail Swing Radius	760mm	760 MM
Seat Height	1500mm	1500 MM
Central Swing	Ketai Hydraulics	Ketai Hydraulics
Travel Motor	6K-310/YunyangHydraulics	4K-310 /YunyangHydraulics
Swing Motor	OMRS-250/YunyangHydraulics	OMRS-250/YunyangHydraulics
Valve	Jinzhou Shuangling	Jinzhou Shuangling
Pump	Jiangsu HuahengHydraulics	Jiangsu HuahengHydraulics
Cylinder	Ruihang Technology	Ruihang Technology
Vehicle - wide Oil Pipe	Shihai Hydraulics	Shihai Hydraulics
Vehicle - wide Wiring Harness	Hezhong Intelligence	Hezhong Intelligence
Engine Model	Briggs & Stratton / Kepu China II / Kepu Euro V / Runtong	Briggs & Stratton / Kepu China II / Kepu Euro V / Runtong
Overall Dimensions	2650MM850MM2200MM	2650MM850MM2200MM
Toolbox	Common Tools	Common Tools

1 Global Service Network



2 24/7 Customer Support

3 Spare Parts Availability

4 Professional Training and Technical Support

5 Warranty and Maintenance Coverage

Features

- Powerful yet compact for confined space operations.
- Enhanced digging and lifting capacities.
- Advanced hydraulics and ergonomic controls.





 **Company Name:** Shandong Torchuck Heavy Machinery Co., Ltd

 **Website:** www.torchuck.com

 **Contact Number:**

 **Email Address:**

 **Social Media Handles:** Facebook / Instagram / LinkedIn

QR code to website or contact form

