

H50

Skid Steer Loader



Torchuck is a global expert in construction machinery solutions. We specialize in designing, manufacturing, and providing high-quality, innovative machinery products tailored to meet diverse global construction and industrial needs.

We are committed to excellence and dedicated to helping our customers succeed through cutting-edge technology and unparalleled service.

--Torchuck is a global expert in construction machinery solutions.



■ Our Mission

To provide global customers with high-quality, high-performance, and highly reliable construction machinery products and integrated solutions, driving global infrastructure and industrial development.

■ Our Vision

To become a world-leading manufacturer and solution provider of construction machinery, building a globally recognized brand and enabling greater value for our customers.

■ Innovation Driven

Continuous technological innovation to lead the industry.

■ Quality First

Win the market with superior quality and create excellent products.

■ Customer Centric

Deeply understand customer needs and deliver premium services.

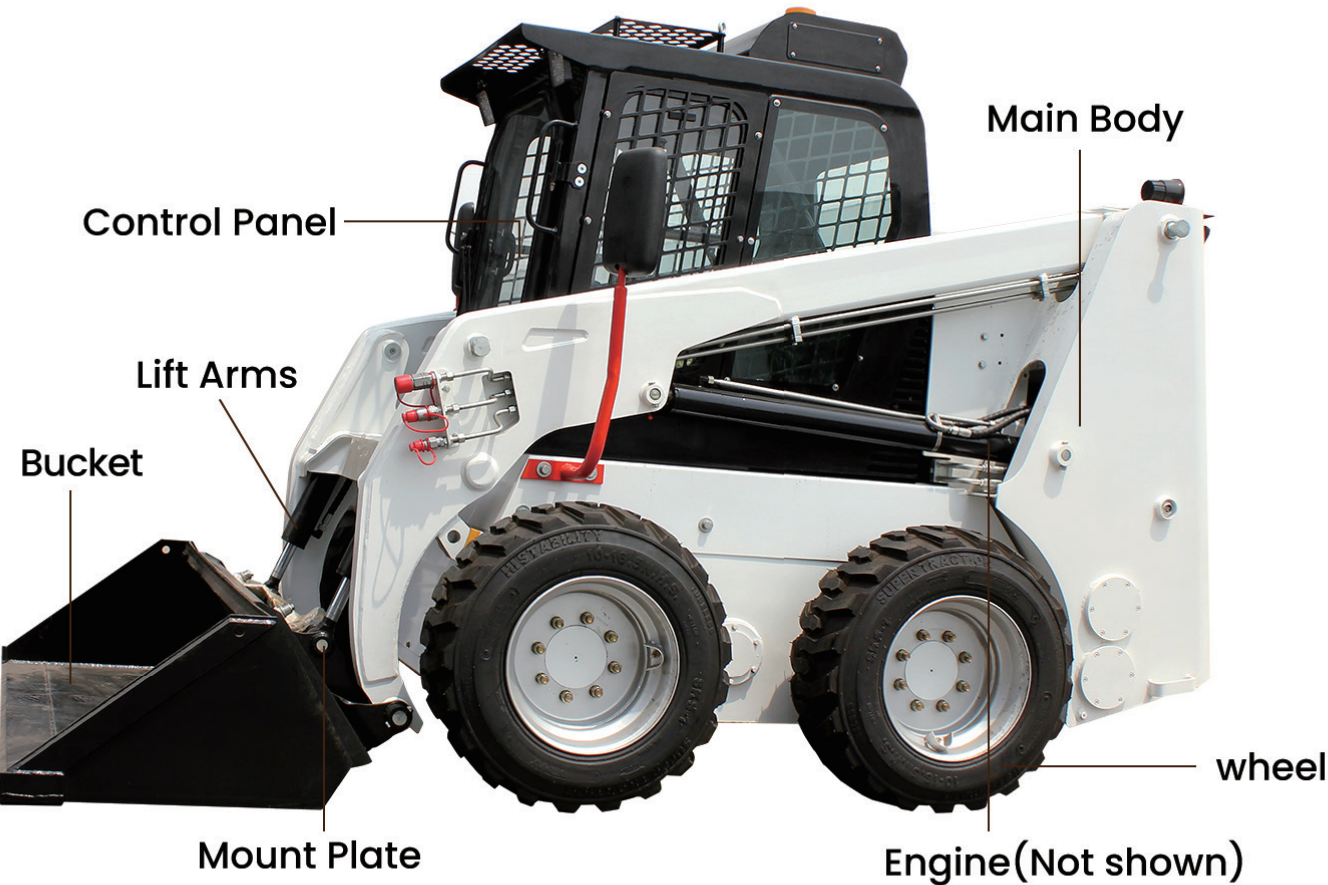
■ Integrity & Win-Win

Uphold integrity and collaborate with partners to create shared value.

■ Green Development

Focus on sustainable development and promote eco-friendly solutions.

H50



Torchuck Skid Steer Loaders are engineered for unmatched versatility, robust performance, and excellent efficiency. Ideal for large-scale projects, distributors, and procurement agents, our loaders deliver consistent reliability and substantial returns on investment.

Technical Specifications

Model Information	Model	SL-H50
	Engine model	Xinchai Guo IV Guo Er 490
	Rated power (kW)	36.8 KW
	Maximum torque (N·m)	200/1600
	Number of cylinders	4
	Displacement (L)	3.3
Transmission System	Transmission System	
	Travel speed (Km/h)	12
	Transmission type	Hydrostatic closed - loop
	Travel pump	Double swash plate axial piston variable displacement pump
	Travel motor	Radial piston fixed X2 / two-speed variable
	Chain specification	800S - 1R - 60
	Chain tension adjustment	None
Performance Parameters	Tire	10.0 (12.0) - 16.5
	Rated load (kg)	760
	Overturning load (kg)	1740
	Lifting mechanism type	Radial lifting
	Bucket breakout force (N)	22000
Hydraulic System	System safety pressure (bar)	180
	Rated flow of hydraulic system	66.2 (L/min)
	Control Method	Mechanical / Hydraulic control
External Dimensions	Maximum height of cab roof (mm)	2007
	Total length with bucket (mm)	3433
	Total length without attachments (mm)	2571
	Total width at tire edge (mm)	1740
	Total width at bucket edge (mm)	1800
	Wheelbase (mm)	1050
Operating Range	Dumping height (mm)	2551
	Maximum dumping distance (mm)	603
	Maximum height of bucket hinge pin (mm)	3265
	Ground clearance (mm)	185
Others	Working weight with standard bucket (Kg)	2950
	Fuel tank capacity (L)	88
	Bucket capacity (m³)	0.35 - 0.5

Compact Skid Steer Loader



Cab & Control System

- Ergonomic cabin ensures safety, comfort, and efficiency
- 270° panoramic view with wide rear mirrors
- Modular “golden triangle” control layout



Easy Operation

- Time-tested joystick controls with skid steering
- Quick attachment swap for versatile tasks
- Smooth handling and extended service life



Engine & Hydraulics

- Powerful engine with high efficiency and low emissions
- Precision hydraulic joystick for reduced fatigue
- Premium hydraulic pump with multi-valve control



Structure & Mobility

- Heavy-duty bucket and coupler for strong, efficient loading
- Reinforced chassis with premium tires for all-terrain performance
- Built for durability, stability, and easy maintenance

■ Attachments

			
Silage Bucket	Land Leveler	Pallet Fork	Rock Bucket
			
Stump Grinder	Dozer Blade	Wood Chipper	Snow Blower
			
Stump Grinder	Enclosed Sweeper	Rotary Tiller	Grapple Bucket
			
Auger	Purpose Bucket	Trencher	Hammer

■ Normal Accessories For Choice



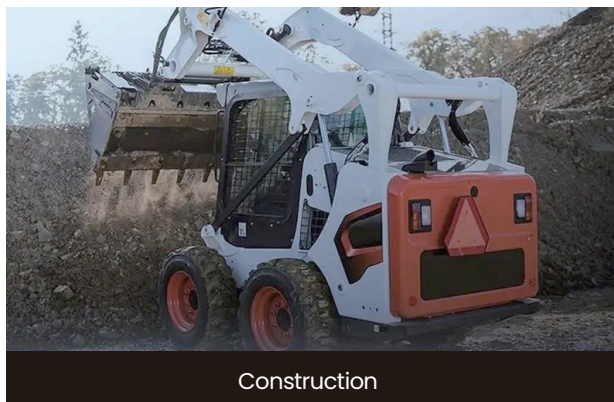
■ Application



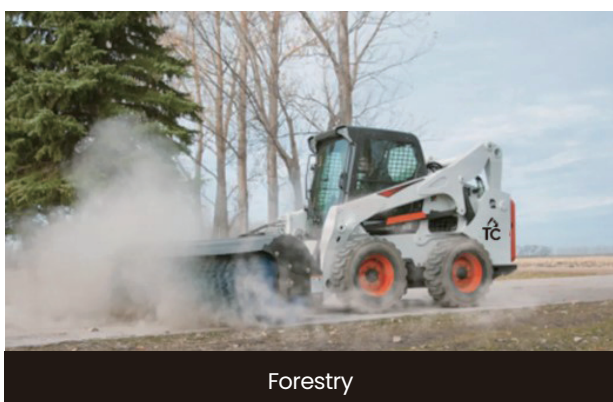
Agriculture



Road construction



Construction



Forestry



Mine

■ H50 Skid Steer Loader – Frequently Asked Questions (FAQ)

1. What is the H50 skid steer loader?

The H50 skid steer loader is a compact, high-power machine with strong hydraulic performance, designed for heavy-duty construction, industrial work, and site maintenance.

2. What are its key features and specifications?

While the full technical sheet may vary by configuration, the H50 typically offers:

A powerful engine with high torque output.

Robust hydraulic flow for heavy attachments.

Compact dimensions for maneuverability in tight spaces.

Heavy-duty lift arms and a reinforced frame for demanding jobs.

3. What attachments are compatible with the H50?

Skid steer loaders are versatile because of their wide range of attachments. Common options for the H50 include:

Buckets (general purpose, high-capacity, 4-in-1).

Pallet forks.

Hydraulic breakers.

Grapple rakes and root grapples.

Snow pushers and sweepers.

Augers, trenchers, stump grinders, and landscape rakes.
(Source: Hopenn Guide to Skid Steer Attachments)

4. What are the recommended maintenance routines?

Every 8–10 hours: Check engine oil, hydraulic fluid, and coolant; clean radiators and filters; grease lift arms and pivot points.

Every 50 hours: Inspect hydraulic hoses and control linkages.

Every 100–250 hours: Replace fuel and air filters.

Every 500 hours: Perform full hydraulic service, including filter and fluid replacement.
(Source: Texas Final Drive)

5. What are common operating mistakes to avoid?

Overloading the machine beyond its rated capacity.

Failing to check engine oil or hydraulic fluid levels.

Skipping filter changes or lubrication schedules.

Using improper attachments or operating them incorrectly.

Ignoring track or tire wear.
(Based on best practices from Bobcat and Cat operator guides.)

6. What safety steps should be followed before and during operation?

Lower the bucket and turn off the engine before entering or exiting the cab.

Always wear the seatbelt and lower the safety bar before starting.

Warm up the engine and hydraulic system, especially in cold weather.

Keep loads low and balanced to avoid tipping.

Engage the parking brake and relieve hydraulic pressure before leaving the seat.
(Source: BigRentz Skid Steer Operation Guide)



 **Company Name:** Shandong Torchuck Heavy Machinery Co., Ltd

 **Website:** www.torchuck.com

 **Contact Number:** +86 19805315556

 **Email Address:** sales@torchuck.com

 **Social Media Handles:** Facebook / Instagram / LinkedIn

QR code to website or contact form

